

PRINTABLE INFO SHEET

Series: Manorwood Ranch & Cape Homes

Model: 2M3003-N Herreshoff



About This Model

Style: Ranch / Bedrooms: 3 / Bathrooms: 2 / Square Feet: 1352

CUSTOMER CONTACT

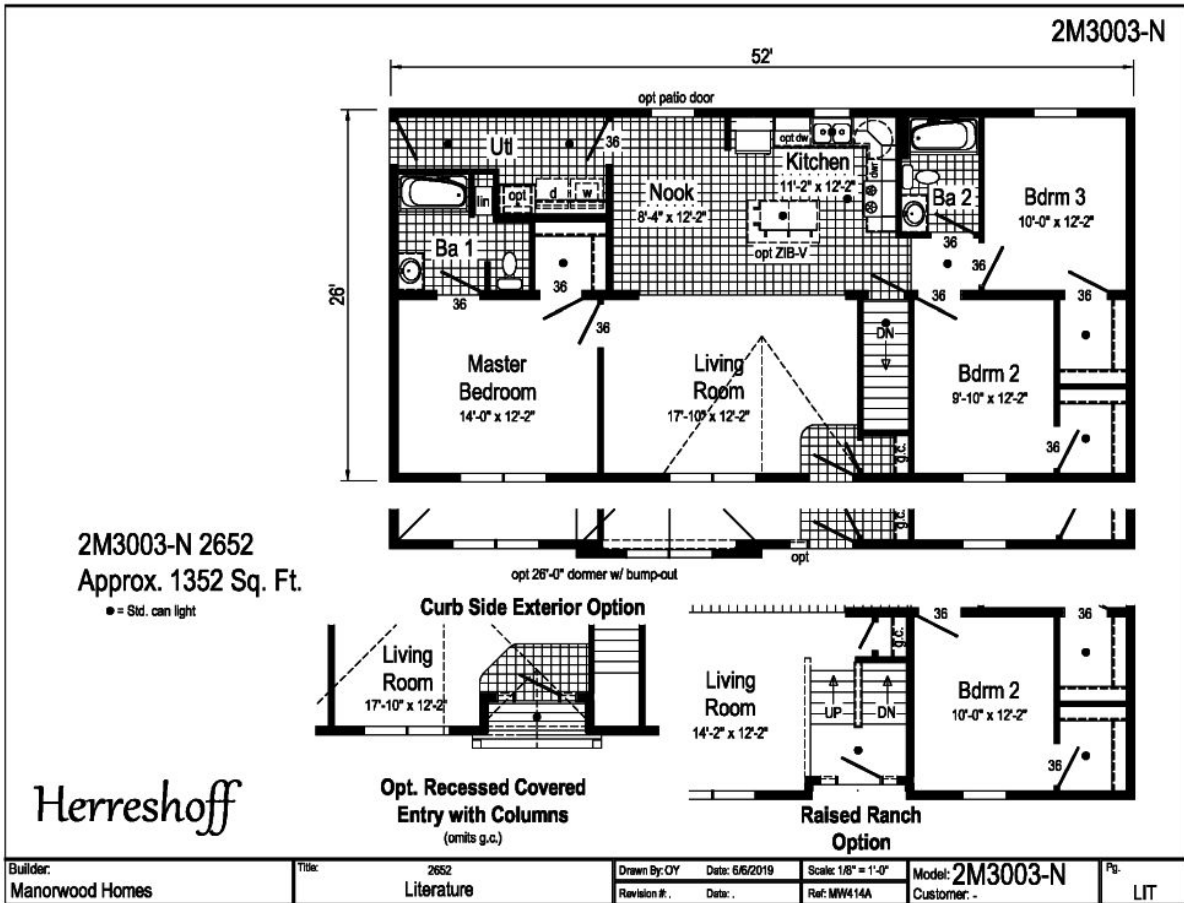
Notes:

PRINTABLE INFO SHEET

Series: Manorwood Ranch & Cape Homes
 Model: 2M3003-N Herreshoff



Floorplan



CUSTOMER CONTACT

Notes: _____

PRINTABLE INFO SHEET

Series: Manorwood Ranch & Cape Homes

Model: 2M3003-N Herreshoff



Standards & Features

FLOOR CONSTRUCTION

2X10 Floor Joists 16" O.C.
3/4" T&G OSB Floor Decking
Insulated Basement Stairwell

EXTERIOR WALLS

2X6 Studs 16" O.C.
Double 2X6 Top Plates
8' Wall Height
Structural OSB Sheathing
Whole House Wind Wrap
Vinyl Siding

INTERIOR WALLS

2X4 Interior Wall Studs 24" O.C.
2X4 Marriage Wall Studs 16" O.C. with
OSB Sheathing
Primed 1/2" Smooth Drywall Throughout

ROOF AND CEILING

8' Flat Ceiling
5/12 Roof Pitch with 12" Eaves
7/12 Roof Pitch with 12" Eave (certain models)
Pre-Engineered 40# Roof Trusses 24" O.C.
90 MPH Wind Exposure C Wind Load Design
Ice Shield
Structural OSB Roof Decking
Shingle Over Ridge Vent Ventilation
Vented Vinyl Soffit
Aluminum Fascia
Aluminum Drip Edge on all Roof Edges
Smooth Drywall Ceiling
Architectural Shingles
(Limited Lifetime Warranty)

ROOF AND CEILING (continued)

Synthetic Roof Underlayment

INSULATION

Exterior Walls R-21 Fiberglass Insulation
Ceiling R-38 Fiberglass Batt Insulation

PLUMBING

PEX Water Lines Stubbed Through Floor
Drain, Water and Vents Stubbed Through Floor
Shut Off Valves for all Sinks, Lavs and Toilets
Plumb, Wire and Vent for Washer/Dryer
Oetiker Clamps

EXTERIOR DOORS AND WINDOWS

3/0 x 6/8 6-Panel Fiberglass Door with Nickel
Hardware & Composite Jambs at Front & Rear
Primed White
Door Pan on Exterior Doors
Low-E Vinyl Insulated Single Hung Argon Filled
White Windows & Mulled where Applicable
Front & Rear Door Kwikset Lockset with Smart Key
15" Raised Panel Shutters Door Side

INTERIOR DOORS AND TRIM

2-Panel Painted White Interior Doors w/
Lever Passage Sets and 3 Mortise Hinges
36" Interior Doors & Where Available
Privacy Locks on Bedroom & Bath Doors
Door Stops
White Wood Colonial Moulding Package
Wire Shelving all Closets and Washer / Dryer Area
Brushed Nickel Hardware

FLOOR COVERING

Congoleum Vinyl Flooring

CUSTOMER CONTACT

Notes:

PRINTABLE INFO SHEET

Series: Manorwood Ranch & Cape Homes

Model: 2M3003-N Herreshoff



Standards & Features (continued)

FLOOR COVERING (continued)

(Kitchen, Baths, Utility and Foyer)
25 oz. Carpet with Stain Protector
5# Rebond Carpet Pad

KITCHEN

3/4 Overlay Classic Craft Cabinetry
- KCMA Certified
Hardwood 5-Piece French Country Oak or Barnwood Oak
Mission Flat Panel Doors
Craftsman Cabinet Crown Moulding
42" Height Kitchen Overhead Cabinets
Dovetailed Drawers
100# Undermount Drawer Guides
Laminate Countertops
8" Deep Stainless Steel Kitchen Sink
Brushed Nickel Metal Faucet with Sprayer
Power Range Hood
Transitional Cabinet Pulls (Brushed Nickel or Black)
Corner Base Lazy Susan (where applicable)
USB Receptacle
Soft Close Drawers

BATHS

Brushed Nickel Metal Faucets
Anti-Scald Valves for Showers & Tubs
Laminate Countertops
China Lavs
Elongated Toilets
Lighted Exhaust Fans with Insulated Ducts
2-Arm Light and Framed Mirror at Vanity
60" One Piece Fiberglass Tub/Shower
Fiberglass Soaker Tub (per plan)

BATHS (continued)

48" One Piece Fiberglass Shower with Glass
Shower Enclosure (per plan)
Double Bowl Bath Vanity (per plan)
Framed Mirrors
Linens with Drawers (where available)

ELECTRICAL

200 AMP Electrical Service with 40/40 Panel Box
2 GFI Exterior Receptacles with In-Use Covers
Craftsman Light at Front Exterior Door
Patina Lantern Light at Rear Exterior Door
Recessed LED Lighting T/O
(Excludes Bedroom Ceiling Lights)
Smoke Detectors with Battery Back-up
Wire for Electric Range
Carbon Monoxide Detector(s)
Electric Doorbell at Front Door

CAPE MODELS

12/12 Roof Pitch with 12" Eaves
12/12 and 7/12 Combination Roof Pitch
with 12" Eaves
Close-Off Package for 2nd Floor Including
Interior Door and Partitions for On-Site Install
3/4" OSB Floor Decking for 2nd Floor & *Shipped Loose*
(2)&110' Electrical Circuits to Junction Boxes
for Future Lights & Electrical Circuit to
Junction Box for Future Smoke Detector(s)
Electrical Circuit to Junction Box for
Future 3-Way Light on 2nd Floor
Rough-In Plumbing for Future Bath

CUSTOMER CONTACT

Notes:

PRINTABLE INFO SHEET

**Series: Manorwood Ranch & Cape
Homes**

Model: 2M3003-N Herreshoff



Standards & Features (continued)

CAPE MODELS (continued)

Stairs with Railing, Handrail and Carpet

Shipped Loose

(2nd Floor Gable End Windows Optional)

10 YEAR RESIDENTIAL WARRANTY

CUSTOMER CONTACT

Notes:
