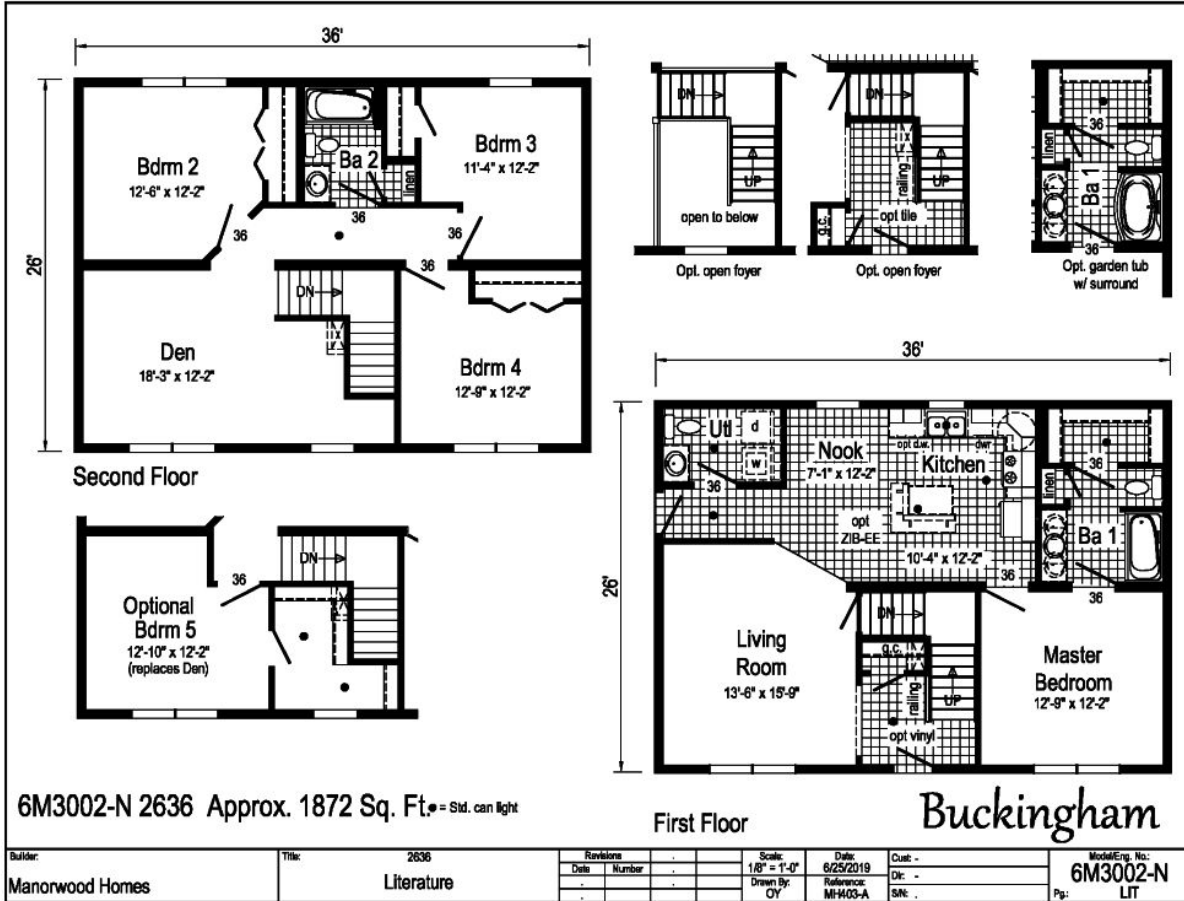


PRINTABLE INFO SHEET

Series: Manorwood Two Story Homes

Model: 6M3002-N Buckingham



About This Model

Style: 2-Story / Bedrooms: 4 / Bathrooms: 3 / Square Feet: 1872

CUSTOMER CONTACT

Notes: _____

PRINTABLE INFO SHEET



Series: Manorwood Two Story Homes
Model: 6M3002-N Buckingham

Standards & Features

FLOOR CONSTRUCTION

2X10 Floor Joists 16" O.C.
3/4" T&G OSB Floor Decking
3/4" OSB Floor Decking on 2nd Floor
Open Web Floor Trusses in Wet Areas of 2nd Floor
Insulated Basement Stairwell

EXTERIOR WALLS

2X6 Studs 16" O.C.
Double 2X6 Top Plates
8' Wall Height
7/16" Structural OSB Sheathing
Whole House Wind Wrap
Vinyl Siding

INTERIOR WALLS

2X4 Interior Wall Studs 24" O.C.
2X4 Marriage Wall Studs 16" O.C. with
7/16" OSB Sheathing
Primed 1/2" Smooth Drywall Throughout

ROOF AND CEILING

5/12 Roof Pitch with 12" Eaves
Pre-Engineered 40# Roof Trusses 24" O.C.
90 MPH Wind Exposure C Wind Load Design
Ice Shield
7/16" Structural OSB Roof Decking
Shingle Over Ridge Vent Ventilation
Vented Vinyl Soffit
Aluminum Fascia
Aluminum Drip Edge on all Roof Edges
Smooth Drywall Ceiling
Architectural Shingles

ROOF AND CEILING (continued)

(Limited Lifetime Warranty)
Synthetic Roof Underlayment

INSULATION

Exterior Walls R-23 Fiberglass Insulation
Ceiling R-38 Fiberglass Batt Insulation

EXTERIOR DOORS AND WINDOWS

3/0 x 6/8 6-Panel Fiberglass Door with Nickel Hardware & Composite Jamb at Front & Rear Primed White
Door Pan on Exterior Doors
Low-E Vinyl Insulated Single Hung Argon Filled White Windows & Muller where Applicable
Front & Rear Door Kwikset Lockset with Smart Key
15" Raised Panel Shutters Door Side

INTERIOR DOORS AND TRIM

2-Panel Painted White Interior Doors w/ Lever Passage Sets and 3 Mortise Hinges
36" Interior Doors & Where Available Privacy Locks on Bedroom & Bath Doors
Door Stops
White Wood Colonial Moulding Package
Wire Shelving all Closets and Washer/Dryer Area
Brushed Nickel Hardware

FLOOR COVERING

Congoleum Vinyl Flooring (Kitchen, Baths, Utility and Foyer)
25 oz. Carpet with Stain Protector
Carpeted Stairs with Railing & Handrail
5# Rebond Carpet Pad

CUSTOMER CONTACT

Notes:

PRINTABLE INFO SHEET

Series: Manorwood Two Story Homes

Model: 6M3002-N Buckingham



Standards & Features (continued)

KITCHEN

84%; Overlay Classic Craft Cabinetry
- KCMA Certified
Hardwood 5-Piece French Country Oak, Rustic Elm, or Barnwood Oak Mission Flat Panel Doors
Craftsman Cabinet Crown Moulding
42" Height Kitchen Overhead Cabinets
Dovetailed Drawers
Soft Close Undermount Drawer Guides
Laminate Countertops
8" Deep Stainless Steel Kitchen Sink Brushed Nickel Metal Faucet with Sprayer Power Range Hood
Transitional Cabinet Pulls (Brushed Nickel or Black)
Corner Base Lazy Susan (where applicable)
USB Receptacle II

BATHS

Brushed Nickel Metal Faucets
Anti-Scald Valves for Showers & Tubs
Laminate Countertops
Square China Lavs
Elongated Toilets
Lighted Exhaust Fans with Insulated Ducts
- All Baths
2-Arm Light at Vanity
60" One Piece Fiberglass Tub/Shower
Fiberglass Soaker Tub (per plan)
48" One Piece Fiberglass Shower with Glass Shower Enclosure (per plan)
Double Bowl Bath Vanity (per plan)

BATHS (continued)

Black Framed Mirrors
Linens with Drawers (where available)

ELECTRICAL

200 AMP Electrical Service with 40/40 Panel Box
2 GFI Exterior Receptacles with In-Use Covers
Light at Front Exterior Door Patina Lantern
Light at Rear Exterior Door
Recessed LED Lighting T/O
Smoke Detectors with Battery Back-up
Wire for Electric Range
Carbon Monoxide Detector(s)
Electric Doorbell at Front Door

PLUMBING

PEX Water Lines Stubbed Through Floor
Drain, Water and Vents Stubbed Through Floor
Shut Off Valves for all Sinks, Lavs and Toilets
Plumb, Wire and Vent for Washer/Dryer
2nd Floor PEX Supply Loop and PVC
Drain Lines
Oetiker Clamps

10 YEAR RESIDENTIAL WARRANTY

CUSTOMER CONTACT

Notes:
