

## PRINTABLE INFO SHEET

Series: Manorwood Grand Deuce

Model: 2M3715-R Deuce 3.0



## About This Model

Style: Ranch / Bedrooms: 3 / Bathrooms: 2 / Square Feet: 1859

## CUSTOMER CONTACT

Notes:

---

---

---

---

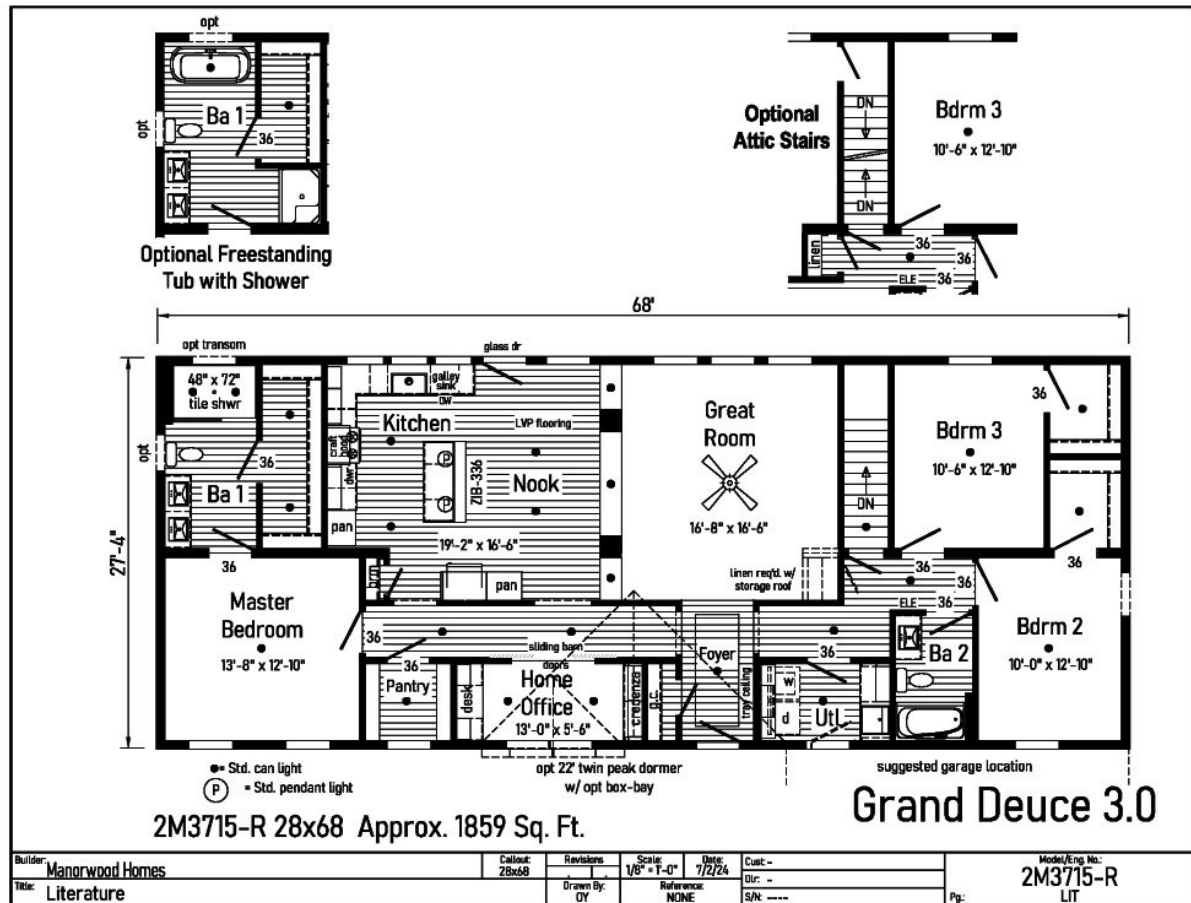
## PRINTABLE INFO SHEET

Series: Manorwood Grand Deuce

Model: 2M3715-R Deuce 3.0



## Floorplan



## CUSTOMER CONTACT

Notes:



## PRINTABLE INFO SHEET

**Series: Manorwood Grand Deuce**  
**Model: 2M3715-R Deuce 3.0**



## Standards & Features

### FLOOR CONSTRUCTION

2X10 Floor Joists 16" O.C.  
 $\frac{3}{4}$ " T&G OSB Floor Decking  
Insulated Basement Stairwell

### EXTERIOR WALLS

2X6 Studs 16" O.C.  
Double 2X6 Top Plates  
8' Wall Height  
Structural OSB Sheathing  
Whole House Wind Wrap  
Vinyl Siding

### INTERIOR WALLS

2X4 Interior Wall Studs 24" O.C.  
2X4 Marriage Wall Studs 16" O.C. with  
OSB Sheathing  
Primed  $\frac{1}{2}$ " Smooth Drywall Throughout

### ROOF AND CEILING

8' Flat Ceiling  
5/12 Roof Pitch with 12" Eaves  
7/12 Roof Pitch with 12" Eave (4M Models)  
Pre-Engineered 40# Roof Trusses 24" O.C.  
90 MPH Wind Exposure C Wind Load Design  
Ice Shield  
Structural OSB Roof Decking  
Shingle Over Ridge Vent Ventilation  
Vented Vinyl Soffit  
Aluminum Fascia  
Aluminum Drip Edge on all Roof Edges  
Smooth Drywall Ceiling  
Architectural Shingles  
(Limited Lifetime Warranty)

### ROOF AND CEILING (continued)

Synthetic Roof Underlayment

### INSULATION

Exterior Walls R-23 Fiberglass Insulation  
Ceiling R-38 Fiberglass Batt Insulation

### PLUMBING

PEX Water Lines Stubbed Through Floor  
Drain, Water and Vents Stubbed Through Floor  
Shut Off Valves for all Sinks, Lavs and  
Toilets  
Plumb, Wire and Vent for Washer/Dryer  
Recessed Dryer Vent Box  
Oetiker Clamps

### EXTERIOR DOORS AND WINDOWS

3/0 x 6/8 6-Panel Fiberglass Door with Nickel  
Hardware & Composite Jambs at Front  
& Rear Primed White  
Door Pan on Exterior Doors  
Low-E Vinyl Insulated Single Hung Argon Filled  
White Windows & Mulled where Applicable  
Front & Rear Door Kwikset Lockset with  
Smart Key  
15" Raised Panel Shutters Door Side

### INTERIOR DOORS AND TRIM

2-Panel Painted White Interior Doors w/ Lever  
Passage Sets and 3 Mortise Hinges  
36" Interior Doors & Where Available  
Privacy Locks on Bedroom & Bath Doors  
Door Stops  
White Wood Colonial Moulding Package  
Wire Shelving all Closets and Washer / Dryer

## CUSTOMER CONTACT

Notes:

---

---

---

---

## PRINTABLE INFO SHEET

**Series: Manorwood Grand Deuce**  
**Model: 2M3715-R Deuce 3.0**



## Standards & Features (continued)

### INTERIOR DOORS AND TRIM (continued)

Area

Brushed Nickel Hardware

### FLOOR COVERING

Congoleum Vinyl Flooring

(Kitchen, Baths, Utility and Foyer)

25 oz. Carpet with Stain Protector

5# Rebond Carpet Pad

### KITCHEN

¾; Overlay Classic Craft Cabinetry

- KCMA Certified

Hardwood 5-Piece French Country Oak,

Rustic Elm, or Barnwood Oak Mission Flat

Panel Doors

Craftsman Cabinet Crown Moulding

42" Height Kitchen Overhead Cabinets

Dovetailed Drawers

Soft Close Undermount Drawer Guides

Laminate Countertops

8" Deep Stainless Steel Kitchen Sink Brushed

Nickel Metal Faucet with Sprayer Power

Range Hood

Cabinet Pulls (Brushed Nickel or Black) Corner

Base Lazy Susan (where applicable) USB

Receptacle II

### BATHS

Brushed Nickel Metal Faucets

Anti-Scald Valves for Showers & Tubs

Laminate Countertops

Square China Lavs

Elongated Toilets

### BATHS (continued)

Lighted Exhaust Fans with Insulated Ducts

2-Arm Light at Vanity

60" One Piece Fiberglass Tub/Shower

Fiberglass Soaker Tub (per plan)

48" One Piece Fiberglass Shower with Glass

Shower Enclosure (per plan)

Double Bowl Bath Vanity (per plan)

Black Framed Mirrors

Linens with Drawers (where available)

### ELECTRICAL

200 AMP Electrical Service with 40/40 Panel Box

2 GFI Exterior Receptacles with In-Use Covers

Gatsby Light at Front Exterior Door

Light at Rear Exterior Door Recessed LED

Lighting T/O

(Excludes Bedroom Ceiling Lights)

Smoke Detectors with Battery Back-up

Wire for Electric Range

Carbon Monoxide Detector(s)

Electric Doorbell at Front Door

### CAPE MODELS

12/12 Roof Pitch with 12" Eaves

(9/12 on 4MC Models)

Close-Off Package for 2nd Floor Including

Interior Door and Partitions for On-Site Install

¾" OSB Floor Decking for 2nd Floor &

\*Shipped Loose\*

(2)&lsquo;110' Electrical Circuits to Junction Boxes

for Future Lights & Electrical Circuit to Junction

Box for Future Smoke Detector(s) & Electrical

## CUSTOMER CONTACT

Notes:

## PRINTABLE INFO SHEET

**Series: Manorwood Grand Deuce**

**Model: 2M3715-R Deuce 3.0**



## Standards & Features (continued)

### CAPE MODELS (continued)

Circuit to Junction Box for Future 3-Way Light  
on 2nd Floor

Rough-In Plumbing for Future Bath

Stairs with Railing, Handrail and Carpet

Shipped Loose

(2nd Floor Gable End Windows Optional)

Sliding Barn Doors

Craftsman Range Hood

## CUSTOMER CONTACT

Notes:

---

---

---

---